

| | | | | | | | | | | | | | | | | | | | |
|----------------------------|----|---|--------|-----------------|-------------|--------------|-----------------|---------------|-------------|-----------------|-------------|---------------|-----------------|--------------|-------------|-------------|-------------|-------------|---------|
| GENERAL | 1 | Manufacturer | RY | RY | RY | RY | RY | RY | RY | RY | RY | RY | RY | RY | RY | RY | | | |
| | 2 | Model | H50C | H60C | H70C | H90C | H100C | H50A | H60A | H70A | H90A | H100A | H50B | H60B | H70B | H90D | H100D | | |
| | 3 | Power Type | Diesel | Diesel | Diesel | Diesel | Diesel | Diesel | Diesel | Diesel | Diesel | Diesel | Diesel | Diesel | Diesel | Diesel | Diesel | | |
| | 4 | Rated Load Capacity | kg | 5000 | 6000 | 7000 | 9000 | 10000 | 5000 | 6000 | 7000 | 9000 | 10000 | 5000 | 6000 | 7000 | 9000 | 10000 | |
| | 5 | Load Centre | mm | 600 | 600 | 600 | 600 | 600 | 600 | 600 | 600 | 600 | 600 | 600 | 600 | 600 | 600 | 600 | |
| CHARACTERISTIC & DIMENSION | 6 | Rated Lift Height | mm | 3000 | 3000 | 3000 | 3000 | 3000 | 3000 | 3000 | 3000 | 3000 | 3000 | 3000 | 3000 | 3000 | 3000 | | |
| | 7 | Free Lift Height | mm | 205 | 205 | 210 | 130 | 130 | 205 | 205 | 210 | 130 | 130 | 205 | 205 | 210 | 130 | 130 | |
| | 8 | Mast Tilt Angle (F/R, α°/β°) | Deg | 6°/12° | 6°/12° | 6°/12° | 6°/12° | 6°/12° | 6°/12° | 6°/12° | 6°/12° | 6°/12° | 6°/12° | 6°/12° | 6°/12° | 6°/12° | 6°/12° | 6°/12° | |
| | 9 | Mast Lowered Height | mm | 2500 | 2500 | 2625 | 2850 | 2850 | 2500 | 2500 | 2625 | 2850 | 2850 | 2500 | 2500 | 2625 | 2850 | 2850 | |
| | 10 | Mast Extended Height (With Backrest) | mm | 4420 | 4420 | 4420 | 4015 | 4015 | 4420 | 4420 | 4420 | 4015 | 4015 | 4420 | 4420 | 4420 | 4015 | 4015 | |
| | 11 | Overhead Guard Height | mm | 2485 | 2485 | 2485 | 2610 | 2610 | 2485 | 2485 | 2485 | 2610 | 2610 | 2485 | 2485 | 2485 | 2610 | 2610 | |
| | 12 | Ground Clearance (Bottom of Mast) | mm | 200 | 200 | 200 | 250 | 250 | 200 | 200 | 200 | 250 | 250 | 200 | 200 | 200 | 250 | 250 | |
| | 13 | Length to Face of Fork (Without Fork) | mm | 3530 | 3530 | 3620 | 4300 | 4300 | 3530 | 3530 | 3620 | 4300 | 4300 | 3530 | 3530 | 3620 | 4300 | 4300 | |
| | 14 | Overall Width | mm | 1995 | 1995 | 1995 | 2165 | 2165 | 1995 | 1995 | 1995 | 2165 | 2165 | 1995 | 1995 | 1995 | 2165 | 2165 | |
| | 15 | Fork Size (LxWxT) | mm | 1220x150x55 | 1220x150x60 | 1220x150x65 | 1220x175x80 | 1220x150x55 | 1220x150x60 | 1220x150x65 | 1220x175x80 | 1220x150x55 | 1220x150x60 | 1220x150x65 | 1220x175x80 | 1220x150x55 | 1220x150x60 | 1220x150x65 | |
| | 16 | Fork Overhang (Wheel Center to Fork Face) | mm | 585 | 585 | 595 | 710 | 710 | 585 | 585 | 595 | 710 | 710 | 585 | 595 | 595 | 710 | 710 | |
| | 17 | Rear Overhang | mm | 670 | 670 | 750 | 790 | 790 | 670 | 670 | 750 | 790 | 790 | 670 | 670 | 750 | 790 | 790 | |
| | 18 | Turning Radius (Outside) | mm | 3290 | 3290 | 3370 | 3920 | 3920 | 3290 | 3290 | 3370 | 3920 | 3920 | 3280 | 3280 | 3360 | 3920 | 3920 | |
| | 19 | *Min.Right Angle Stacking Aisle Width Add Load Length and Clearance)* | mm | 5215 | 5215 | 5315 | 5845 | 5915 | 5215 | 5215 | 5315 | 5845 | 5915 | 5215 | 5215 | 5315 | 5845 | 5915 | |
| PERFORMANCE | 20 | Travel Speed (No Load) | km/h | 28 | 28 | 28 | 30 | 30 | 30 | 30 | 28 | 30 | 30 | 27 | 26 | 26 | 30 | 30 | |
| | 21 | Lifting Speed (Full Load) | mm/sec | 400 | 400 | 330 | 310 | 310 | 500 | 500 | 460 | 310 | 310 | 400 | 400 | 330 | 310 | 310 | |
| | 22 | Lowering Speed (Full Load) | mm/sec | 500 | 500 | 500 | 500 | 500 | 500 | 500 | 500 | 500 | 500 | 500 | 500 | 500 | 500 | 500 | |
| | 23 | Max.Drawbar Pull (Full Load) | KN | 53 | 53 | 52 | 57 | 57 | 54 | 54 | 53 | 57 | 57 | 45 | 45 | 43 | 57 | 57 | |
| | 24 | Max.Gradeability (Full Load) | % | 32 | 27 | 24 | ≤20 | ≤20 | 35 | 32 | 29 | ≤20 | ≤20 | 20 | 20 | 20 | ≤20 | ≤20 | |
| | 25 | Service Brake (Operation/Control) | | Foot/Powershift | | | Foot/Powershift | | | Foot/Powershift | | | Foot/Powershift | | | | | | |
| | 26 | Parking Brake (Operation/Control) | | Hand/Mechanical | | | Hand/Mechanical | | | Hand/Mechanical | | | Hand/Mechanical | | | | | | |
| CHASSIS | 27 | Tyre (Front x 4) | mm | 8.25-15-14PR | | 9.00-20-14PR | | 8.25-15-14PR | | 9.00-20-14PR | | 8.25-15-14PR | | 9.00-20-14PR | | | | | |
| | 28 | Tyre (Rear x 2) | mm | 8.25-15-14PR | | 9.00-20-14PR | | 8.25-15-14PR | | 9.00-20-14PR | | 8.25-15-14PR | | 9.00-20-14PR | | | | | |
| | 29 | Front Tread | mm | 1470 | 1470 | 1470 | 1600 | 1600 | 1470 | 1470 | 1470 | 1600 | 1600 | 1470 | 1470 | 1470 | 1600 | 1600 | |
| | 30 | Rear Tread | mm | 1700 | 1700 | 1700 | 1700 | 1700 | 1700 | 1700 | 1700 | 1700 | 1700 | 1700 | 1700 | 1700 | 1700 | 1700 | |
| | 31 | Wheelbase | mm | 2250 | 2250 | 2250 | 2800 | 2800 | 2250 | 2250 | 2250 | 2800 | 2800 | 2250 | 2250 | 2250 | 2800 | 2800 | |
| WEIGHT | 32 | Total Weight | kg | 8000 | 8750 | 9450 | 12200 | 12900 | 7980 | 8640 | 9350 | 12200 | 12900 | 7980 | 8640 | 9350 | 12200 | 12900 | |
| | 33 | Front Axle Weight Distribution (Full Load) | kg | 11600 | 13050 | 14600 | 19980 | 20610 | 11660 | 13050 | 14570 | 19980 | 20610 | 11660 | 13050 | 14570 | 19980 | 20610 | |
| | 34 | Rear Axle Weight Distribution (Full Load) | kg | 1400 | 1700 | 1850 | 2220 | 2290 | 1320 | 1590 | 1780 | 2220 | 2290 | 1320 | 1590 | 1780 | 2220 | 2290 | |
| | 35 | Front Axle Weight Distribution (No Load) | kg | 4050 | 3900 | 3850 | 5380 | 5660 | 4010 | 3880 | 3860 | 5380 | 5660 | 4010 | 3880 | 3860 | 5380 | 5660 | |
| | 36 | Rear Axle Weight Distribution (No Load) | kg | 3950 | 4850 | 5600 | 6820 | 8240 | 3970 | 4760 | 5490 | 6820 | 8240 | 3970 | 4760 | 5490 | 6820 | 8240 | |
| POWER & TRANSMISSION | 37 | Battery | V/Ah | 24/90 | 24/90 | 24/90 | 24/90 | 24/90 | 24/90 | 24/90 | 24/90 | 24/90 | 24/90 | 24/90 | 24/90 | 24/90 | 24/90 | 24/90 | |
| | 38 | Engine Model | | 6102BG6 | | | | A-6BG1QC | | | | S6S-T(Eu III) | | | | S6K(Eu III) | | | |
| | 39 | Engine Manufacturer | | CHAOCHAI | | | | ISUZU | | | | MITSUBISHI | | | | MITSUBISHI | | | |
| | 40 | Rated Output / r.p.m. | kw | 80.9/2500 | | | | 82/2000 | | | | 63.9/2300 | | | | 82.4/2000 | | | |
| | 41 | Rated Torque / r.p.m. | N-m | 353/1650 | | | | 416/1400—1600 | | | | 285/1700 | | | | 500/1200 | | | |
| | 42 | No.of Cylinder | | 6 | 6 | 6 | 6 | 6 | 6 | 6 | 6 | 6 | 6 | 6 | 6 | 6 | 6 | 6 | |
| | 43 | Bore x Stroke | mm | 102x118 | 102x118 | 102x118 | 102x118 | 102x118 | 105x125 | 105x125 | 105x125 | 105x125 | 105x125 | 105x125 | 94x120 | 94x120 | 94x120 | 102x130 | 102x130 |
| | 44 | Displacement | L | 5.785 | 5.785 | 5.785 | 5.785 | 5.785 | 6.494 | 6.494 | 6.494 | 6.494 | 6.494 | 4.966 | 4.966 | 4.966 | 6.373 | 6.373 | |
| | 45 | Fuel Tank Capacity | L | 120 | 120 | 120 | 120 | 120 | 120 | 120 | 120 | 120 | 120 | 120 | 120 | 120 | 120 | 120 | |
| | 46 | Transmission Type | | Powershift | | | Powershift | | | Powershift | | | Powershift | | | | | | |
| | 47 | Transmission Stage (FWD/RVS) | | 2/2 | 2/2 | 2/2 | 2/2 | 2/2 | 2/2 | 2/2 | 2/2 | 2/2 | 2/2 | 2/2 | 2/2 | 2/2 | 2/2 | 2/2 | |
| | 48 | Operating Pressure (For Attachments) | Mpa | 17 | 17 | 17 | 17 | 17 | 17 | 17 | 17 | 17 | 17 | 17 | 17 | 17 | 17 | 17 | |

* All Rights Reserved by RY Forklift.

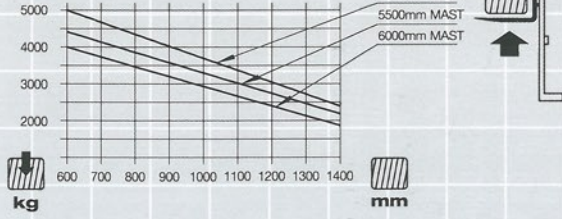
| MAST TYPE | MAST NAME | MAX. FORK HEIGHT (mm) | LOAD CAPACITY (LOAD CENTRE 600mm) (kg) | | | | | TILT ANGLE | |
|----------------------------------|-----------|-----------------------|--|------|------|------|-------|-------------|----------|
| | | | H50 | H60 | H70 | H90 | H100 | H50/H60/H70 | H90/H100 |
| 2-Stage Wide View Mast | M300 | 3000 | 5000 | 6000 | 7000 | 9050 | 10000 | 6-12 | |
| | M330 | 3300 | 5000 | 6000 | 7000 | 9050 | 10000 | 6-12 | |
| | M350 | 3500 | 5000 | 6000 | 7000 | 9050 | 10000 | 6-12 | |
| | M400 | 4000 | 5000 | 6000 | 7000 | 9050 | 10000 | 6-12 | |
| | M450 | 4500 | 5000 | 6000 | 7000 | 9050 | 10000 | 6-6 | |
| | M500 | 5000 | 5000 | 6000 | 7000 | 8050 | 10000 | 6-6 | |
| 2-Stage Full Free Wide View Mast | M550 | 5500 | 4750 | 5700 | 6600 | 8030 | 9000 | 3-6 | |
| | M600 | 6000 | 4400 | 5400 | 6400 | 8015 | 8000 | 3-6 | |
| | FM300 | 3000 | 5000 | 6000 | 7000 | 9000 | 10000 | 6-12 | |
| | FM330 | 3300 | 5000 | 6000 | 7000 | 9000 | 10000 | 6-12 | |
| | FM350 | 3500 | 5000 | 6000 | 7000 | 9000 | 10000 | 6-12 | |
| | FM370 | 3700 | 5000 | 6000 | 7000 | 9000 | 10000 | 6-12 | |
| 3-Stage Full Free Wide View Mast | FM400 | 4000 | 5000 | 6000 | 7000 | 9000 | 10000 | 6-12 | |
| | TFM430 | 4300 | 4500 | 5600 | 6500 | 7800 | 8000 | 6-12 | |
| | TFM450 | 4500 | 4500 | 5600 | 6500 | 7800 | 7800 | 6-12 | |
| | TFM470 | 4700 | 4500 | 5600 | 6500 | 7200 | 7500 | 6-6 | |
| | TFM500 | 5000 | 4500 | 5600 | 6500 | 7200 | 7500 | 6-6 | |
| | TFM550 | 5500 | 4200 | 5300 | 6300 | 6800 | 7000 | 3-6 | |
| TFM600 | 6000 | 4000 | 5000 | 6000 | 6000 | 6000 | 3-6 | | |

| MAST TYPE | MAST NAME | OVERALL HEIGHT | | | | | | | |
|----------------------------------|-----------|----------------|-----------------------|----------|-------------|-----------------------|------|---------|----------|
| | | LOWERED | EXTENDED | | LOWERED | EXTENDED | | LOWERED | EXTENDED |
| | | | WITH/WITHOUT BACKREST | | | WITH/WITHOUT BACKREST | | | |
| H50/H60 | | H70 | | H90/H100 | | | | | |
| 2-Stage Wide View Mast | M300 | 2500 | 3830 / 4420 | | 2625 | 3830 / 4420 | | 2850 | 4015 |
| | M330 | 2650 | 4130 / 4720 | | 2775 | 4130 / 4720 | | 3000 | 4315 |
| | M350 | 2750 | 4330 / 4920 | | 2875 | 4330 / 4920 | | 3100 | 4515 |
| | M400 | 3050 | 4830 / 5420 | | 3175 | 4830 / 5420 | | 3400 | 4800 |
| | M450 | 3300 | 5330 / 5920 | | 3425 | 5330 / 5920 | | 3650 | 5250 |
| | M500 | 3550 | 5830 / 6420 | | 3675 | 5830 / 6420 | | 3900 | 5800 |
| 2-Stage Full Free Wide View Mast | M550 | 3850 | 6330 / 6920 | | 3975 | 6330 / 6920 | | 4200 | 6250 |
| | M600 | 4100 | 6830 / 7420 | | 4225 | 6830 / 7420 | | 4450 | 6600 |
| | FM300 | 2045 | 3780 / 4370 | | 2460 | 3780 / 4370 | | 2850 | 4015 |
| | FM330 | 2195 | 4080 / 4670 | | 2610 | 4080 / 4670 | | 3000 | 4315 |
| | FM350 | 2295 | 4280 / 4870 | | 2710 | 4280 / 4870 | | 3100 | 4515 |
| | FM370 | 2395 | 4530 / 5120 | | 2835 | 4530 / 5120 | | 3250 | 4715 |
| 3-Stage Full Free Wide View Mast | FM400 | 2595 | 4780 / 5370 | | 3010 | 4780 / 5370 | | 3400 | 4800 |
| | TFM430 | 2585 | 5130 / 5720 | | 2585 | 5130 / 5720 | | 2820 | 5050 |
| | TFM450 | 2660 | 5280 / 5870 | | 2640 | 5280 / 5870 | | 2820 | 5630 |
| | TFM470 | 2740 | 5580 / 6170 | | 2740 | 5580 / 6170 | | 3000 | 6080 |
| | TFM500 | 2805 | 5780 / 6370 | | 2805 | 5780 / 6370 | | 3100 | 6280 |
| | TFM550 | 2940 | 6180 / 6770 | | 2940 | 6180 / 6770 | | 3225 | 6680 |
| TFM600 | 3140 | 6780 / 7370 | | 3140 | 6780 / 7370 | | 3525 | 7280 | |

| MAST TYPE | MAST NAME | FREE LIFT (mm) | | | | FREE LIFT (mm) | TOTAL WEIGHT (kg) | | | | |
|----------------------------------|-------------|-----------------------|-------------|-----------------------|------|----------------|-------------------|------|-------|-------|-------|
| | | WITH/WITHOUT BACKREST | | WITH/WITHOUT BACKREST | | | H90/H100 | H50 | H60 | H70 | H90 |
| | | H50/H60 | | H70 | | | | | | | |
| 2-Stage Wide View Mast | M300 | 205 | | 210 | | 215 | 7980 | 8640 | 9350 | 12200 | 12900 |
| | M330 | 205 | | 210 | | 215 | 8030 | 8690 | 9400 | 12280 | 12980 |
| | M350 | 205 | | 210 | | 215 | 8060 | 8720 | 9440 | 12360 | 13060 |
| | M400 | 205 | | 210 | | 215 | 8270 | 8930 | 9650 | 12520 | 13220 |
| | M450 | 205 | | 210 | | 215 | 8350 | 9010 | 9730 | 12680 | 13380 |
| | M500 | 205 | | 210 | | 215 | 8430 | 9090 | 9810 | 12820 | 13520 |
| 2-Stage Full Free Wide View Mast | M550 | 205 | | 210 | | 215 | 8630 | 9290 | 10000 | 12900 | 13580 |
| | M600 | 205 | | 210 | | 215 | 8710 | 9370 | 10080 | 12980 | 13640 |
| | FM300 | 1940 / 1520 | | 1940 / 1520 | | - | 8030 | 8690 | 9400 | 12400 | 13100 |
| | FM330 | 2090 / 1670 | | 2090 / 1670 | | - | 8060 | 8720 | 9440 | 12480 | 13180 |
| | FM350 | 2190 / 1770 | | 2190 / 1770 | | - | 8100 | 8760 | 9480 | 12560 | 13260 |
| | FM370 | 2315 / 1895 | | 2315 / 1895 | | - | 8270 | 8930 | 9650 | 12760 | 13460 |
| 3-Stage Full Free Wide View Mast | FM400 | 2490 / 2070 | | 2490 / 2070 | | - | 8310 | 8970 | 9690 | 12820 | 13580 |
| | TFM430 | 1260 / 1630 | | 1260 / 1630 | | 1470 | 7980 | 8640 | 9350 | 13050 | 13350 |
| | TFM450 | 1360 / 1730 | | 1360 / 1730 | | 1570 | 8010 | 8660 | 9370 | 13200 | 13500 |
| | TFM470 | 1410 / 1780 | | 1410 / 1780 | | 1720 | 8030 | 8690 | 9400 | 13350 | 13650 |
| | TFM500 | 1510 / 1880 | | 1510 / 1880 | | 1820 | 8060 | 8720 | 9440 | 13500 | 13800 |
| | TFM550 | 1630 / 2005 | | 1630 / 2005 | | 1945 | 8100 | 8780 | 9480 | 13650 | 13950 |
| TFM600 | 1930 / 2305 | | 1930 / 2305 | | 2245 | 8270 | 8930 | 9650 | 13800 | 14100 | |

Notice: 1. With side shifter, load capacity subtract 350Kg.
2. Double front wheels are standard.

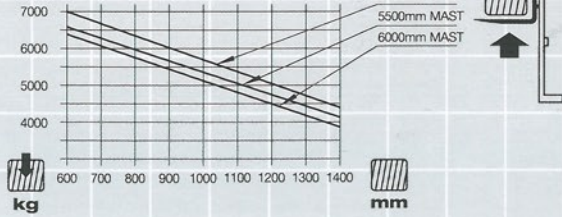
H50



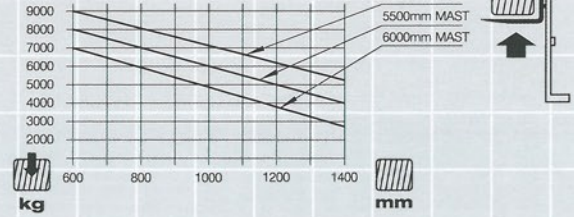
H60



H70



H90



H100

