



Self-Propelled Articulating Boom

**Z™-34/22
DC and Bi-Energy**

Efficient electric or
Bi-Energy power
for all day use.



Z™-34/22 DC and Bi-Energy

Z-34/22 - Choose from Electric or Bi-Energy power

- The revolutionary Genie Bi-Energy system combines the quiet, emission-free and efficient operation of a 48V DC machine with the versatility of a diesel-powered generator to provide a boom that is ideal for indoor and outdoor applications.
- The Kubota Z482, 9 kw, water cooled, 2-cylinder, diesel powered generator package will **charge a fully discharged machine in only 3.5 hours.**
- The Kubota Z482 diesel will operate for approximately **17 hours before refuelling** is necessary. The engine is mounted on a swing-out plate and protected with gull wing style covers for serviceability.
- Both models operate with the all-new **Sep-Ex 48V DC drive** system. The Bi-Energy has the added feature of an on-board diesel powered generator. The generator acts as a 100 amp battery charger to provide enough electrical power to operate all boom functions even when the batteries are fully discharged.
- The all new Sep-Ex drive motors and controller provide automatic **hill braking and ramp braking.**

- The Sep-Ex drive system allows maximum drive performance resulting in **30% gradeability and 6 km/h travel speed.**
- The Sep-Ex motor controller **eliminates the need for forward/reverse contactors or speed sensors.** This reduces complexity and improves the reliability of the drive system.
- The direct electric, 48V drive system provides outstanding battery life when not using the engine generator.
- An on-board 25 amp **AC charger is standard** to provide a means for overnight charging.

Standard Features

- 12.4 m (40 ft 8 in) working height
- 6.8 m (22 ft 4 in) horizontal reach
- Compact 1.73 m (68 in) width
- 1.2 m (4 ft) jib features 144° working range
- 227 kg (500 lb) platform capacity
- 48V DC power source
- Fully proportional controls
- 160° powered platform rotation
- Self-levelling platform
- Auxiliary power unit
- Drive enable system
- Dual wheel spring applied brakes
- Battery charge indicator (Bi-Energy only)
- Hour meter
- Foam-filled tyres

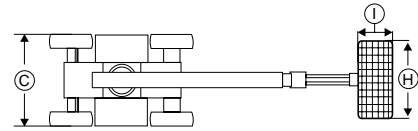
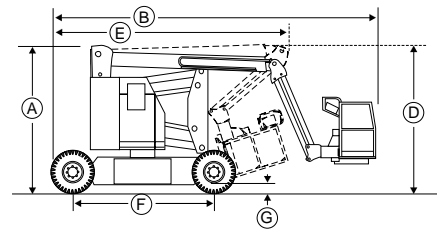
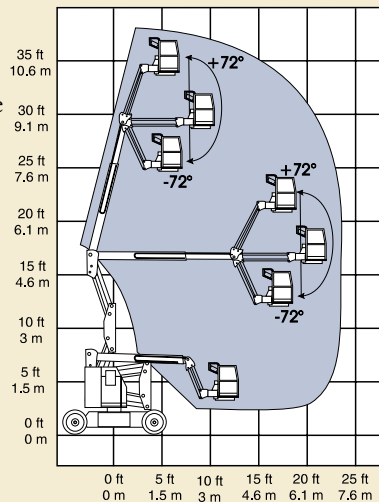
Options and Accessories

- Alarm package
- Cold start package
- 1.2 m (4 ft) platform
- Gated platform
- Full mesh platform
- Air line to platform
- Platform-mounted work light
- Hand pump
- Pipe cradles
- Non-marking tyres
- Rough terrain tyres
- LVI (low voltage interrupt)

Standards Compliance

- ANSI/SIA A92.5
- CSA CAN3-B354.4-M82
- CE compliance option
- AS 1418.10

Range of Motion



Specifications Metric US

Working height max	12.4 m	40 ft 8 in
Platform height max	10.6 m	34 ft 8 in
Ⓐ Height - stowed	2 m	6 ft 7 in
Ⓑ Length - stowed	5.63 m	18 ft 6 in
Ⓒ Width	1.73 m	5 ft 8 in
Ⓓ Storage height	2.26 m	89 in
Ⓔ Storage length	4.1 m	13 ft 5 in
Ⓕ Wheelbase	1.88 m	6 ft 2 in
Ⓖ Ground clearance	15 cm	6 in
Ⓗ Platform width	1.42 m	56 in
Ⓘ Platform length	76 cm	30 in
Horizontal reach max	6.8 m	22 ft 4 in
Up and over clearance	4.57 m	15 ft
Lift capacity	227 kg	500 lb
Turning radius - outside	4 m	13 ft 1 in
Turning radius - inside	1.73 m	5 ft 8 in
Turntable rotation	355°	355°
Turntable tailswing	zero	
Power source	48V (8 6V 315 AH batteries) or 48V with Kubota Diesel 9 kw (12 hp)	
Drive speed - stowed	0 - 6 km/h	0 - 3.7 mph
Drive speed - raised*	0 - 1 km/h	0 - 0.6 mph
Controls	24V DC proportional	
Platform levelling	self-levelling	
Platform rotation	160°	160°
Auxiliary power unit	standard (electric)	
Tyres	9 - 14.5 pneumatic	
Gradeability	30%	30%
Hydraulic tank capacity	19 litre	5 gal
Fuel tank capacity	35 litre	9.3 gal
Weight - DC	5,103 kg	11,250 lb
Weight - Bi-Energy	4,763 kg	10,500 lb

* In lift mode (platform raised), the machine is designed for operation on firm, level surface only.

Distributed By:

Genie Industries™

GENIE AUSTRALIA
591 Boundary Road, Darra Qld 4076
PO Box 394, Richlands Qld 4077
Telephone **07 3375 1660**
Toll Free in Australia **1800 331 660**
Fax 07 3375 1002
www.genielift.com

GENIE UNITED STATES
18340 NE 76th Street
P.O. Box 97030, Redmond, Washington 98073-9730
Telephone **425 881 1800**
Toll Free in USA/Canada **800 536 1800**
Fax 425 883 3475
www.genielift.com