

Rough Terrain Telescopic Boom Material Handler

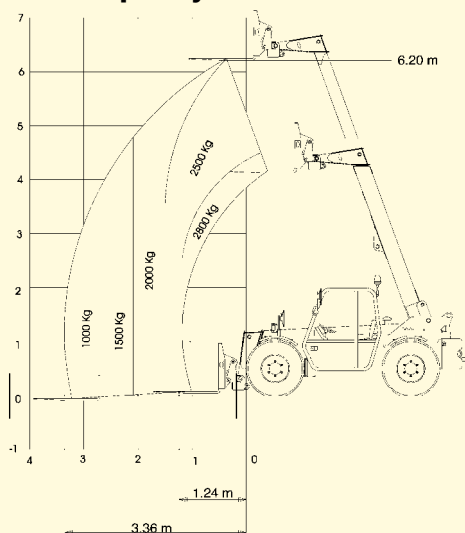
GTH™-3007

An exceptionally
compact and
manoeuvrable
machine with
superior lift capacity



Genie Australia
GENIE MEANS MORE THAN LIFTING

Lift Capacity Chart



Standard Features

- 3,000 kg (6,614 lb) lift capacity
- 7 m (22 ft 10 in) max. lifting height
- 3.80 m (12 ft 5 in) max. forward reach
- 360° visibility over the folded boom
- Four-wheel drive
- Three steering modes: front wheel steer, crab steer and coordinated steer
- Powered assisted steering
- Closed loop hydrostatic drive for smooth and precise positioning
- Two-speed mechanical gearbox
- Variable displacement pump and motor
- Multi-function proportional joystick
- Brakes: multi-disk, oil immersed, self-adjusting on front axles
- Quick coupling of tools from cab
- Side-mounted engine for easy access to components
- Turbo-charged, direct injection engine with low emissions. Oil cooled.
- Floating forks
- Lockable fuel tank
- Comfortable cab with tinted glass, windscreen wiper, heater
- Full road lights
- Easy access to components for maintenance

Options and Accessories

- Air conditioning
 - Adjustable spotlights
 - Spare wheel
 - Jib 1 m/500 kg (3 ft 3 in/1,102 lbs)
 - Jib 2 m/400 kg (6 ft 6 in/882 lbs)
 - Loading shovel 800 Lt (176 gal.) or 1200 Lt (264 gal.)
 - 250 Lt/55 gal. concrete mixing bucket
 - Concrete bucket (500 Lt/110 gal.) with manual or hydraulic discharge
 - Fixed hook on plate 2,500 kg (5,511 lbs)
 - Wiper on cab roof
 - Windshield protection grid
 - Brick-holder bucket
- A wide range of options, accessories and attachments is available for civil and industrial works. For a full list, please consult your Genie representative.

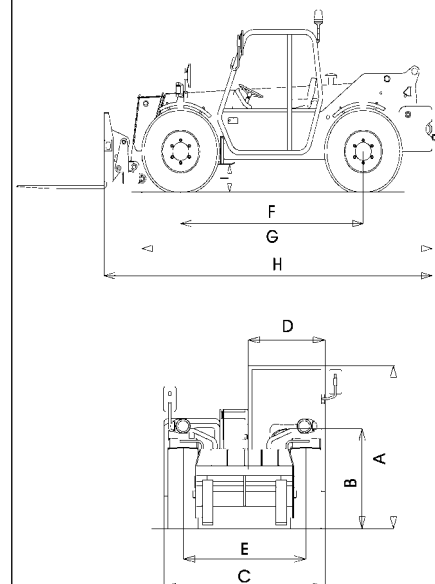
Safety System

- Longitudinal stability control system with:
- Anti-overload device with automatic lock-out of boom extension and lowering.
 - Visual display with coloured LEDs.
 - Audible alarm.

Standard Compliance

- pr EN 1459, annex B
- Operating cab conforms to ISO 3471 (ROPS) and ISO 3449 (FOPS)
- Low emission diesel engine according to UE 97/68 directives

(A)	Height: 2.05 m (6 ft 7 in)
(B)	Height at steering wheel: 1.33 m (4 ft 4in)
(C)	Width: 2.00 m (6 ft 6½ in)
(D)	Inside cab width: 0.86 m (2 ft 6in)
(E)	Track: 1.60 m (5 ft 3 in)
(F)	Wheelbase: 2.65 m (8 ft 8in)
(G)	Length at front wheels: 4.09 m (13 ft 5 in)
(H)	Length at fork-holder plate: 4.69 m (15 ft 4½ in)
(I)	Ground clearance: 0.41 m (1 ft 4 in)



Specifications

	Metric	Imperial
Lift capacity (max)	3,000 kg	6,614 lb
Lift capacity at max. height	2,500 kg	5,512 lb
Lift capacity at max. reach	1,250 kg	2,755 lb
Lifting height (max.)	7.00 m	22 ft 10 in
Reach at max. height	0.70 m	2 ft 3 in
Maximum forward reach	3.80 m	12 ft 5 in
Lifting speed	7 seconds	7 seconds
Lowering speed	7 seconds	7 seconds
Boom extension speed	8 seconds	8 seconds
Boom retraction speed	4 seconds	4 seconds
Inside/outside turning radius	2.20/4.05 m	7 ft 3 in/13 ft 3 in
Towing capacity at dynamometer	6,500 kg	14,330 lb
Obstruction angle	90°	90°
Departure angle	52°	52°
Engine type	Deutz turbo diesel 60 kW (81.5 hp) Direct injection. Reduced emissions.	
Travel speed (max.)	24 km/h	15 mph
Tank capacities		
Fuel	92 Lt	20.2 gal.
Engine oil	8 Lt	1.76 gal.
Coolant	15 Lt	3.3 gal.
Hydraulic oil	90 Lt	19.8 gal.
Forks	Floating - Length 1.20 m, section 130x45 mm	
Fork holder plate rotation	135°	135°
Tyres	400/70-24 PR 14	
Weight	6,000 kg	13,228 lb

Genie Industries

GENIE AUSTRALIA

591 Boundary Road, Darra Qld 4076
PO Box 394, Richlands Qld 4077
Telephone **07 3375 1660**
Toll Free in Australia **1800 331 660**
Fax 07 3375 1002
<http://www.genieindustries.com>

GENIE UNITED STATES

18340 NE 76th Street
PO. Box 97030
Redmond, Washington 98073-9730
Telephone **(425) 881-1800**
Toll Free in USA/Canada **800-536-1800**
Fax (425) 883-3475
<http://www.genieindustries.com>